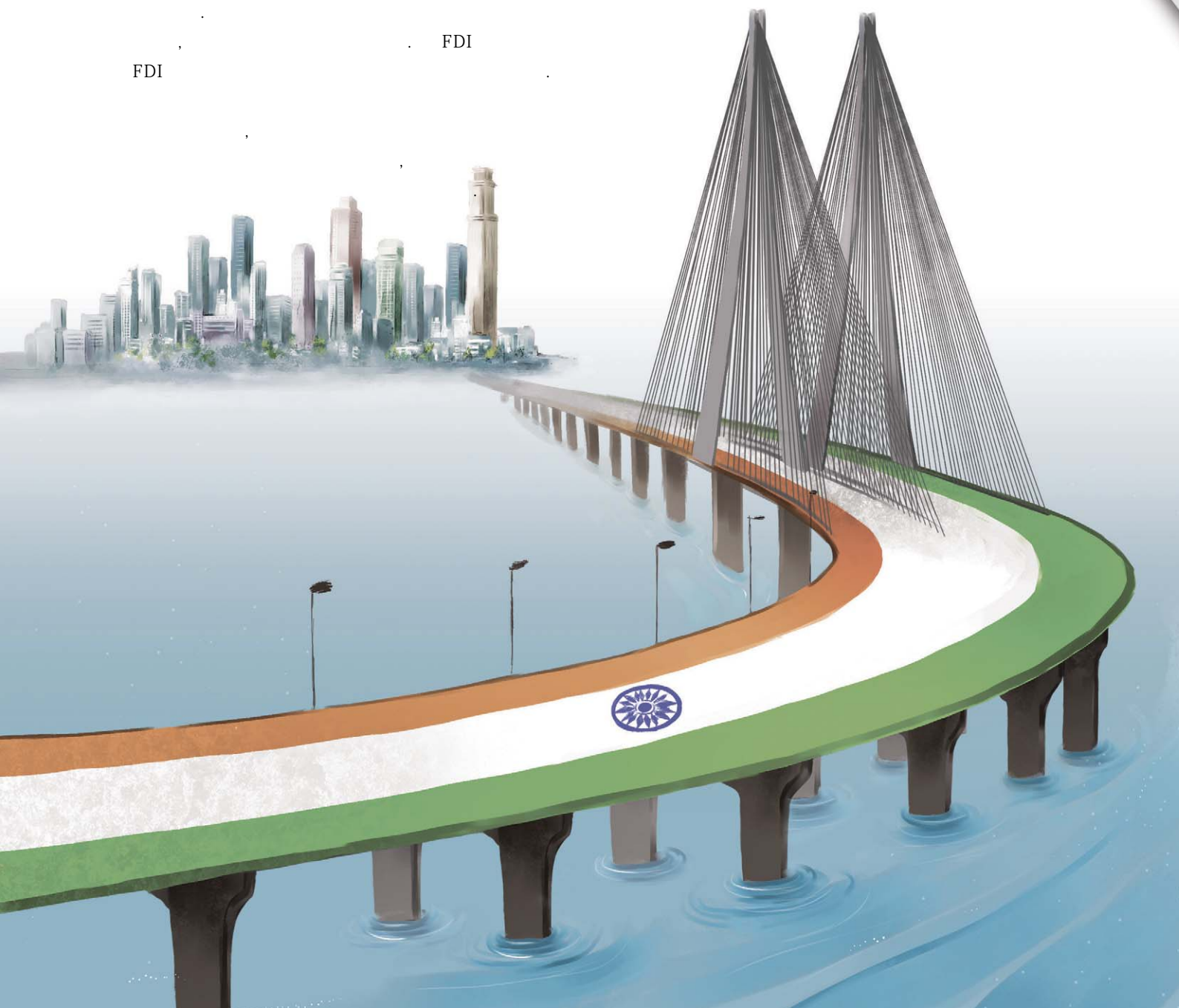


Cover Story

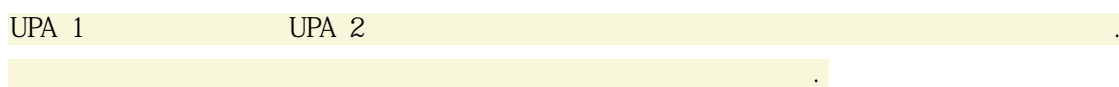
FDI

FDI



Cover Story

‘ ,
,



UPA , 6 2
150 2
6~ 7%
UPA (am admi)
2010
0.25%

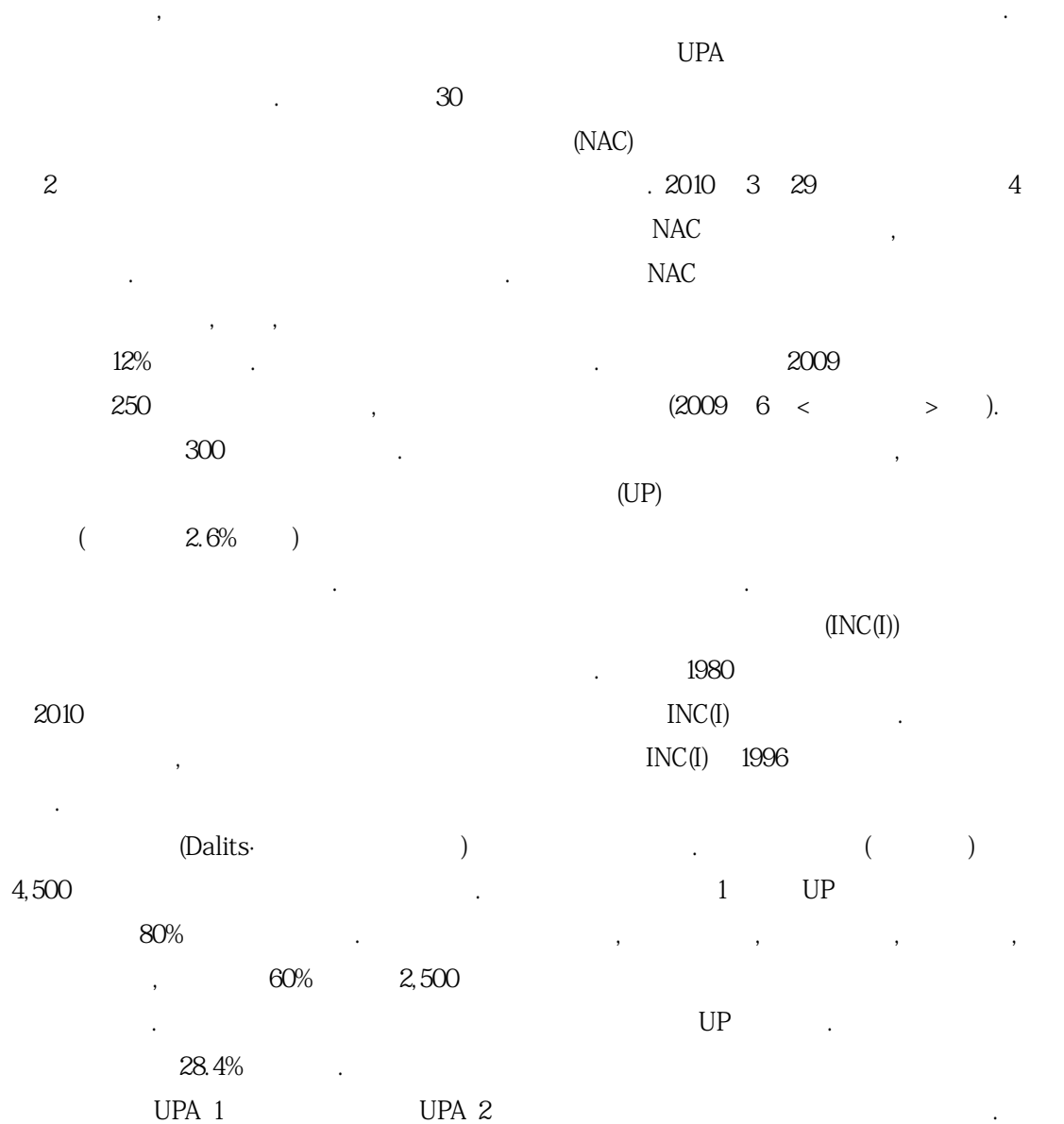
(FY) 2008 2009 , 2010
6.7% 7.2% UPA

GDP

(:%)

	2004	2005	2006	2007	2008	2009	2010
	0.26	0.27	0.28	0.29	0.33	0.35	0.36
+	0.85	0.88	0.90	0.88	1.02	1.06	-

: Frontline, 2010.3



Cover Story



NAC

10%

UP

NAC 2004 6 4 UPA 1
. NAC UPA
(NCMP) 3
. NAC 1
100
UPA 1
NAC 4 5
NAC
, NAC
NAC
NAC

POSRI

,
,
,

, ? ,
.

2008 9 ? ?
2008 (?
FY) 6.7% . ?
9.2%
4.7% 1.6% ,
10.3% 3.2% . GDP
10.5% 9.8% 50% ,
GDP , , , , ,
GDP .
2008 GDP
16.2% ,
54.8% . 1 GDP 1 (unorganized sector)
50% .
1 GDP 3,300 ?
42% .
(demand bias hypoth
esis)
?

Cover Story

(Baumol's diseases)

1947 35%, 27%

60 60%

(pro 25%, 12%

ductivity bias hypothesis) 60

(Baumol)

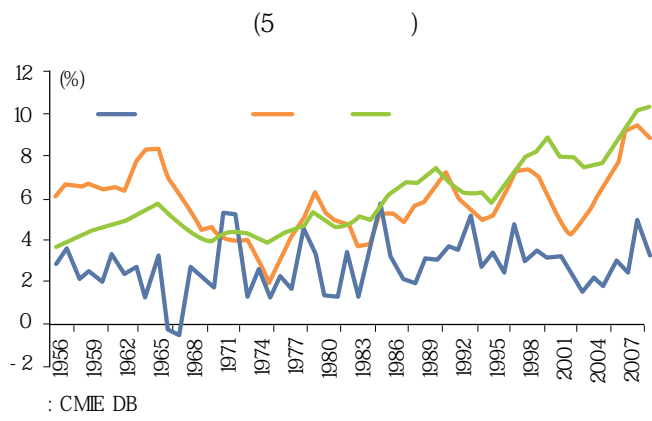
1980

3~4%

60%, 16%

5 24%

5 , 10



1

, 100

?

2004

(SEZ)

IT

1

1



11 5

(2007~ 2011)

10

5

2012

12

FDI

FDI . FDI
FDI .

20⁰⁵

(FDI)

51%

1992

FDI

100%

FDI

FDI

FDI

FDI

FDI

FDI

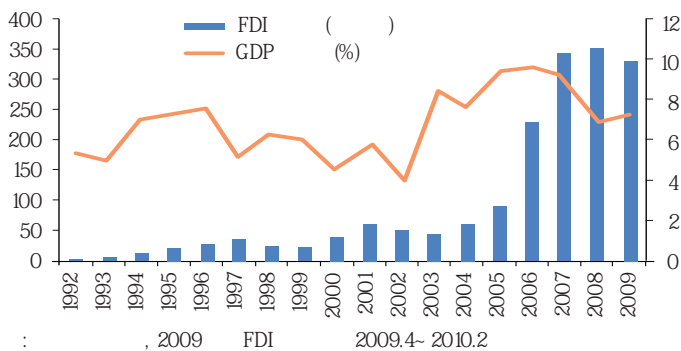
FDI

FDI

1991

FDI

GDP FDI



FDI

1947

1991

44

2006

GDP

67.7%

13.4%

Cover Story

FDI (단위: 백만 달러, %)

	1991.8 ~ 2000.3		2000.4 ~ 2010.1	
	액	비율	액	비율
1	3,711	17.3	10,304	21.5
2	3,675	17.2	4,273	8.9
3	2,361	11.0	4,028	8.4
4	1,771	8.3	3,648	7.6
5	1,480	6.9	3,317	6.9
6	1,327	6.2	2,039	4.3
7	1,258	5.9	1,988	4.2
8	1,207	5.6	1,318	2.8
9	865	4.0	1,128	2.4
10	430	2.0	1,093	2.3

3

FDI

FDI

FDI

FDI

70~80%

FDI

2005 3 9%

2008 2009

6.7%, 7.2%

9%

A.T.

2010 FDI

3

2005

FDI

FDI

FDI

FDI

FDI



jsimm@posri.re.kr

Cover Story

2010 1 11%
 36%
 2010 10
 2010 83.5 2008 7
 144
 29
 2009 2 39.5
 15

(:)

	2000	2005	2006	2007	2008
1	6.3	22.0	29.2	37.0	48.3
2	7.5	19.6	21.0	26.1	34.2
3	3.8	8.4	9.7	12.2	15.1
4	4.3	11.2	13.0	14.1	12.9
5	5.6	7.3	10.3	12.7	12.6
6	0.2	15	15	13	8.2
7	12	2.7	3.6	6.5	7.6
8	4.2	4.5	5.3	5.8	6.9
9	1.2	3.7	3.9	4.2	6.7
10	0.4	18	3.0	4.3	6.3

: 2008
 : IMF, Balance of Payments Statistics Yearbook 2009

(:)

	2001	2005	2006	2007	2008
1	14,273	22,125	28,334	37,217	51,581
2	7,037	24,102	27,954	38,791	48,524
3	10,146	23,062	26,877	27,136	26,304
4	6,164	13,566	15,251	16,302	18,643
5	9,194	11,945	13,031	14,513	15,908
6	4,720	7,961	8,890	10,739	11,776
7	3,933	6,933	7,585	9,839	11,064
8	1,995	6,482	8,496	10,496	10,727
9	1,167	3,329	5,435	9,221	9,980
10	116	4,733	6,718	8,539	9,380

: 2008
 : World Bank, Migration and Development Brief(No.11), 2009.11

2004
 ?
 1996
 39
 2004
 2008 464
 483
 2005 1
 IT ()
) 40%
 BPO(Bu
 siness Process Outsourcing)



: IHS Global Insight Report, India. 2010.4.13

R&D

1, 2

2014 83.5
GDP 2.0%

2009

, 2010

(remittance)

2008 516
2007 372

IT

